

Former ASARCO Smelter East Helena RCRA Facility



Public Meeting
November 6, 2024

US Environmental Protection Agency
Montana Environmental Trust Group, LLC
Trustee of the Montana Environmental Custodial Trust



Montana Environmental Trust Group, LLC
Trustee of the Montana Environmental Custodial Trust

Welcome Instructions

For Zoom Users

- Unless speaking, please mute yourself by using microphone icon or pressing *6 on your phone
- You can type questions/comments in the chat box
- If your computer audio is not working, mute yourself and phone in to hear the meeting by dialing 1-646-876-9923, use meeting ID 946 584 8922# and passcode 664564#
- This meeting is being recorded. By participating, you consent to be recorded.

For All Participants

- Please introduce yourself before asking a question or making a comment
- Questions can be repeated or read from the chat

THANK YOU JOINING US!



Montana Environmental Trust Group, LLC
Trustee of the Montana Environmental Custodial Trust

Agenda

- Welcome and Introductions: Bridget Williams (USEPA)
- Remarks from the City of East Helena
- Groundwater Update: Mark Walker (Hydrometrics)
- Cleanup and Redevelopment Update: Cindy Brooks (METG)
- Greenway Trail Progress and Plans: Mary Hollow (PPLT)
- Redevelopment Progress and Plans: Gary Oakland (Prickly Pear Estates)
- East Helena Housing Plans and Goals: Jacob Kuntz (Habitat for Humanity)
- Questions and Comments: Bridget Williams (USEPA)



Groundwater Update

Mark Walker
Hydrogeologist
Hydrometrics



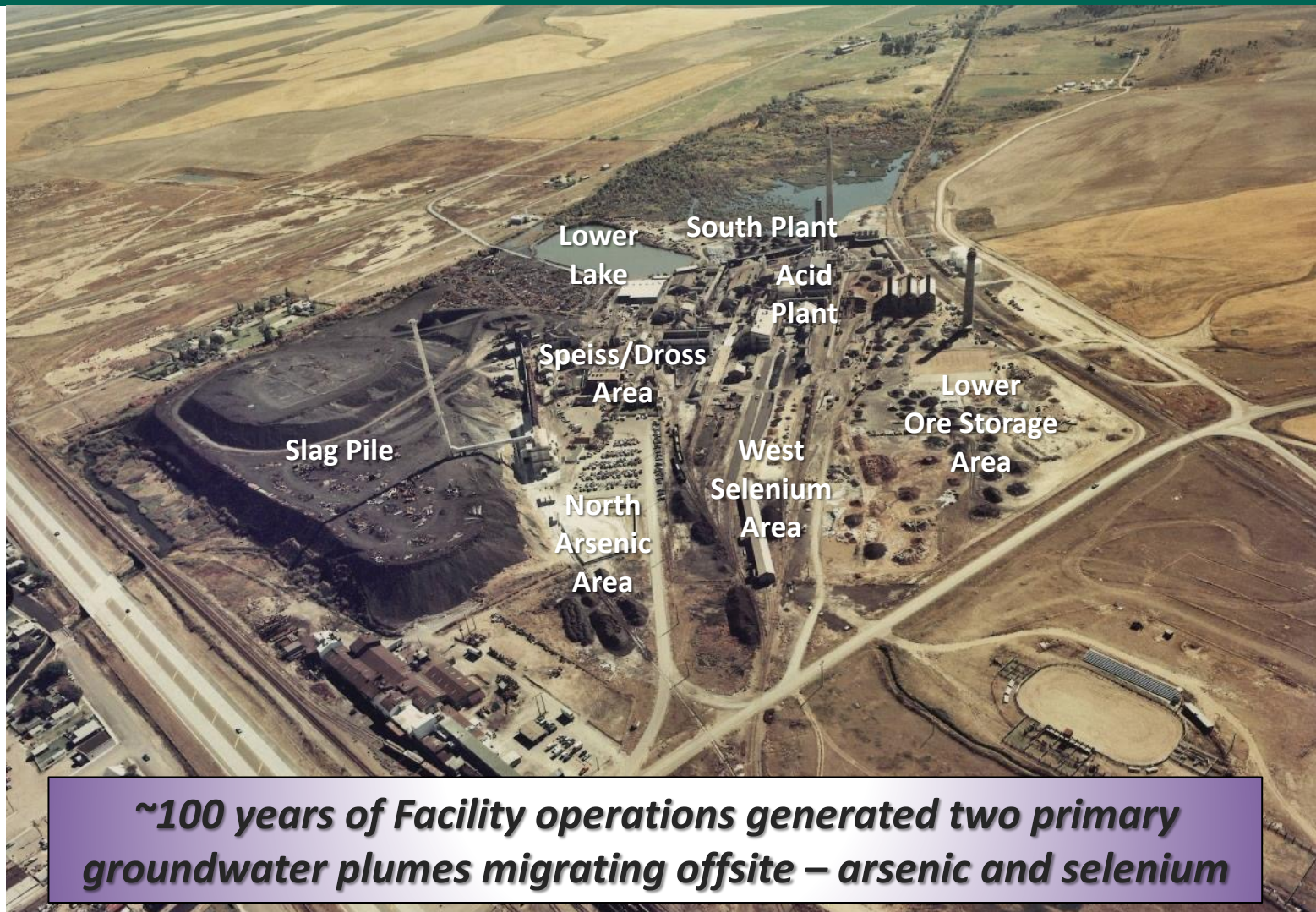
Montana Environmental Trust Group, LLC
Trustee of the Montana Environmental Custodial Trust

2024 Groundwater Program Update

- ✓ Summary of Historic Contaminant Source Areas
- ✓ Groundwater Corrective Actions
- ✓ Monitoring Scope - Surface Water & Groundwater
- ✓ 2024 Surface Water Results
- ✓ 2024 Groundwater Arsenic and Selenium Plumes

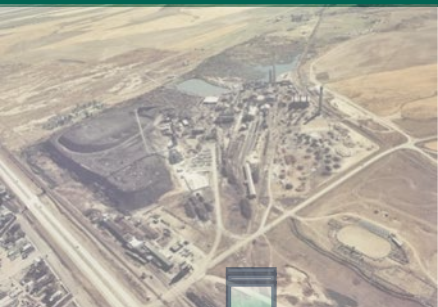


Groundwater Contaminant Source Areas Addressed by Corrective Measures



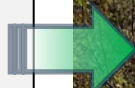
Montana Environmental Trust Group, LLC
Trustee of the Montana Environmental Custodial Trust

Corrective Measures Summary

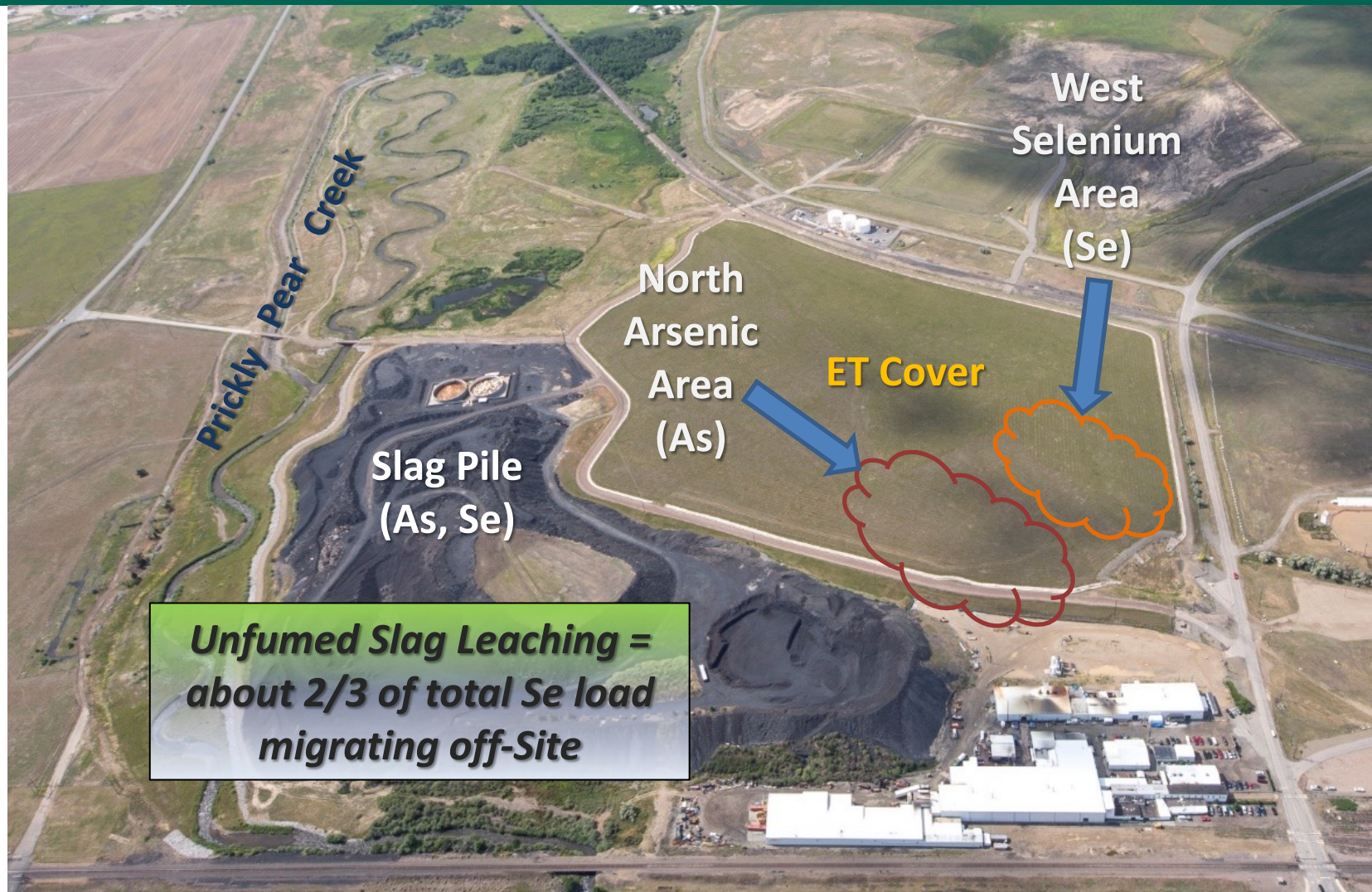


Corrective Measures

- South Plant Hydraulic Control (SPHC)
- Source Removals
- Evapotranspiration (ET) Cover
- Speiss-Dross Slurry Wall
- *Slag Pile Cover (Planned)*

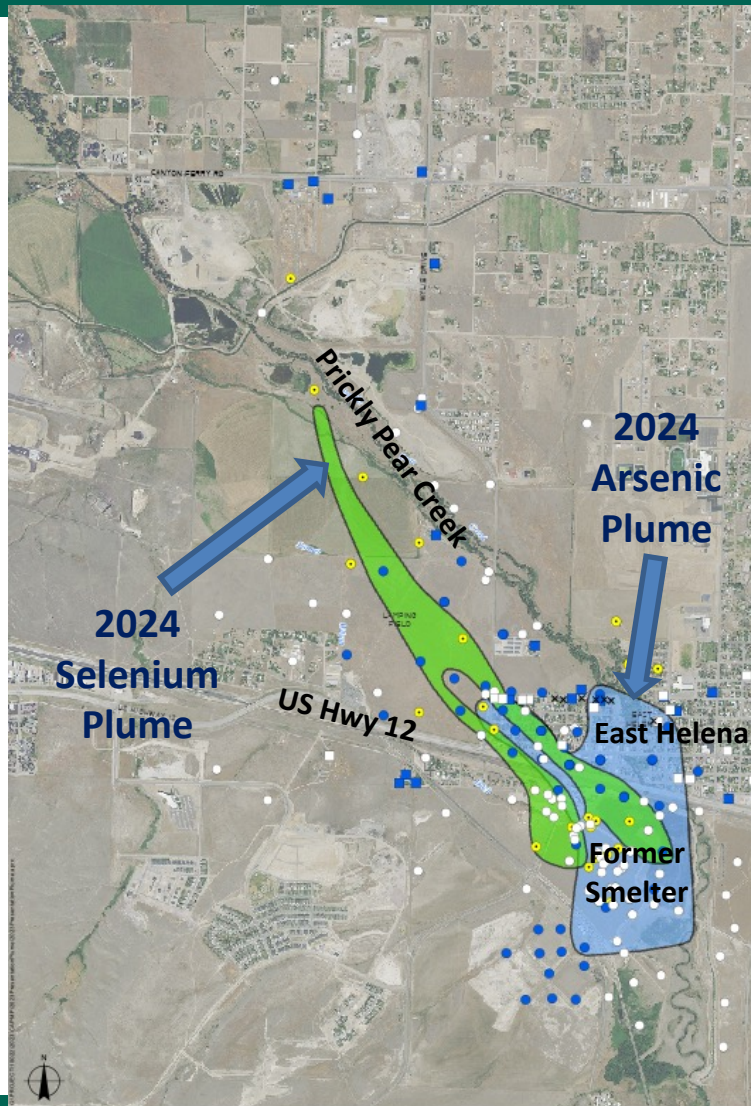


Primary Remaining Groundwater Contaminant Source Areas



Montana Environmental Trust Group, LLC
Trustee of the Montana Environmental Custodial Trust

2024 Interim Corrective Action Performance Monitoring Plan (CAPMP)

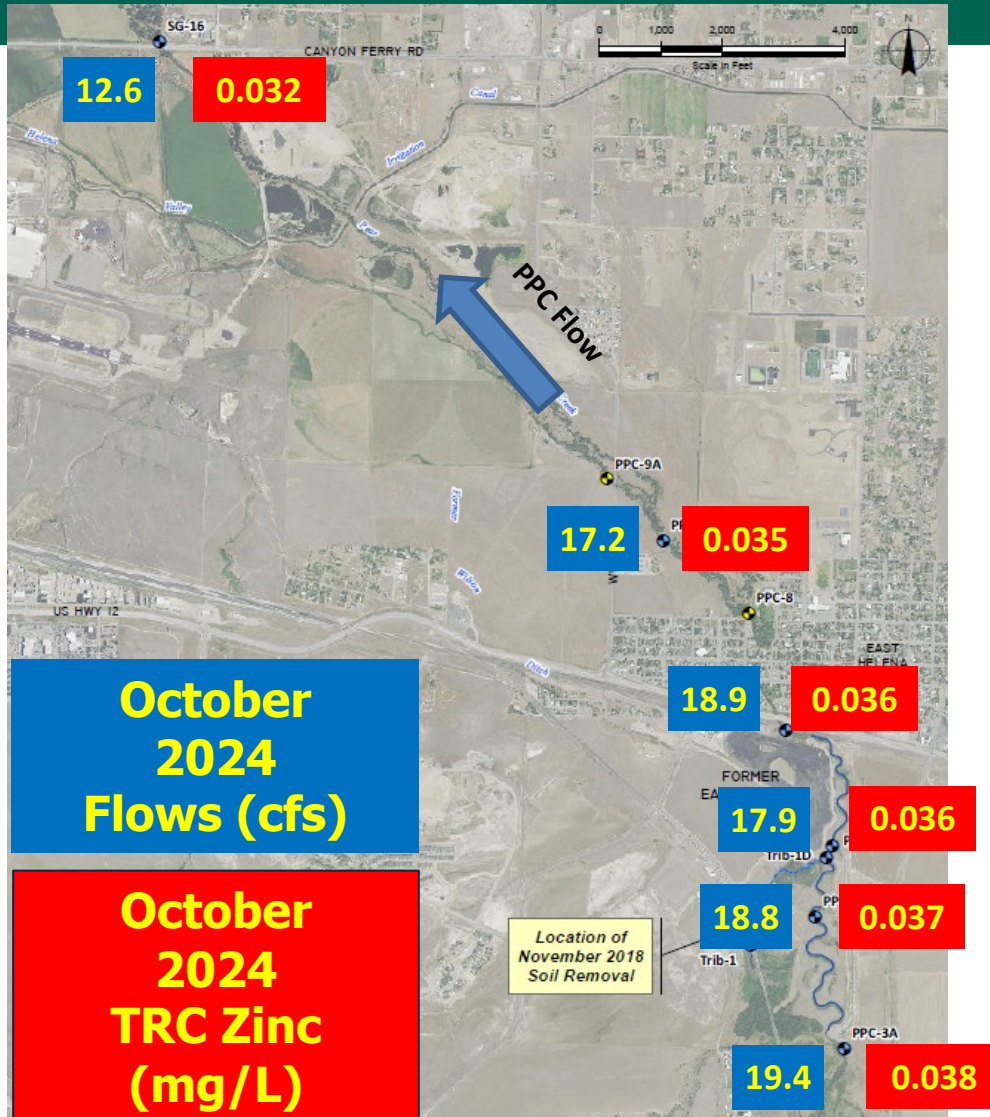


2024 Monitoring Scope

- 1. Semi-annual Groundwater Monitoring**
 - Spring – 24 wells
 - Fall – 77 wells
- 2. Semi-annual Residential / Water Supply Well Monitoring**
 - Spring & Fall – 16 wells
 - Includes City of East Helena supply wells
- 3. Semi-annual Surface Water Monitoring**
 - Spring & Fall – 11 locations on Prickly Pear Creek and tributary drainage
- 4. Water Level Measurements**
 - Spring & Fall – 170 monitoring wells and 10 surface water locations



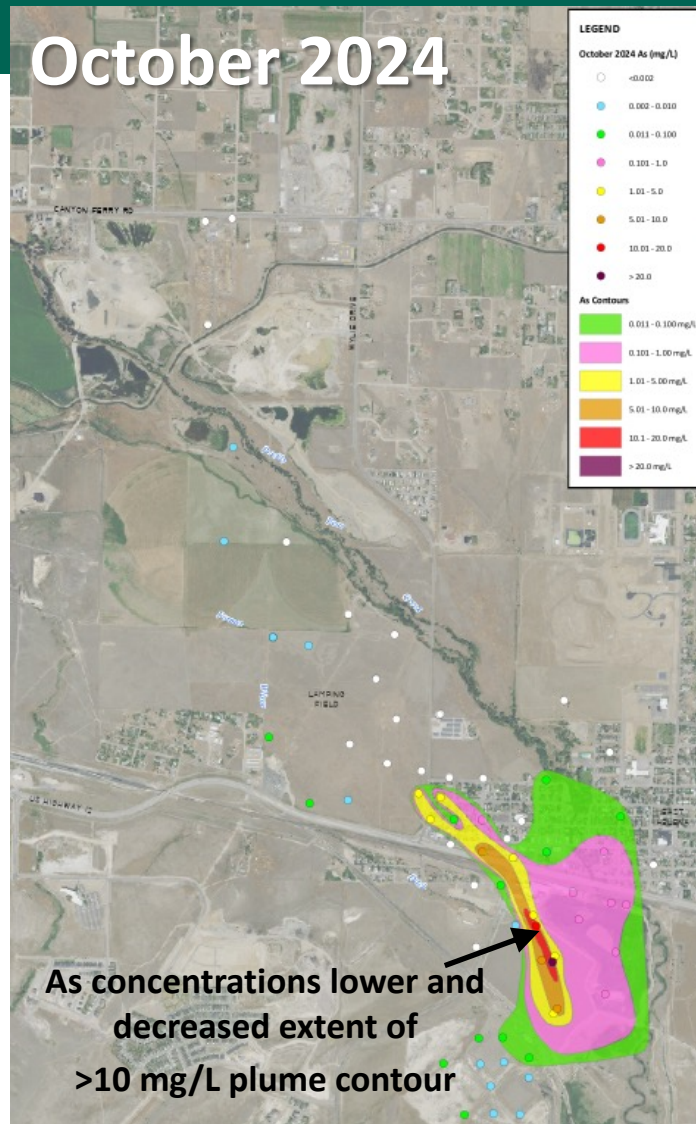
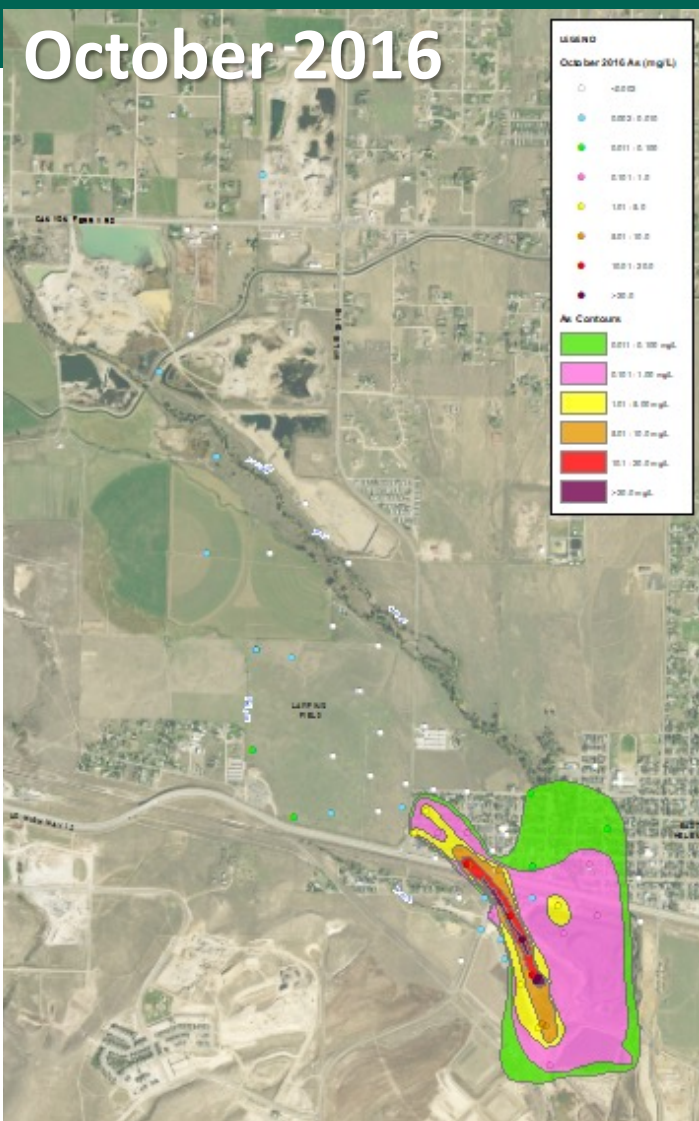
2024 Surface Water Results



- ✓ No significant net flow gains or losses adjacent to Facility
- ✓ Flow decreases downstream of Facility (losses to groundwater, irrigation diversions)
- ✓ No significant changes in metals concentrations from upstream to downstream; upstream sources indicated (Pb, Zn)
- ✓ Consistent with pre-remediation data



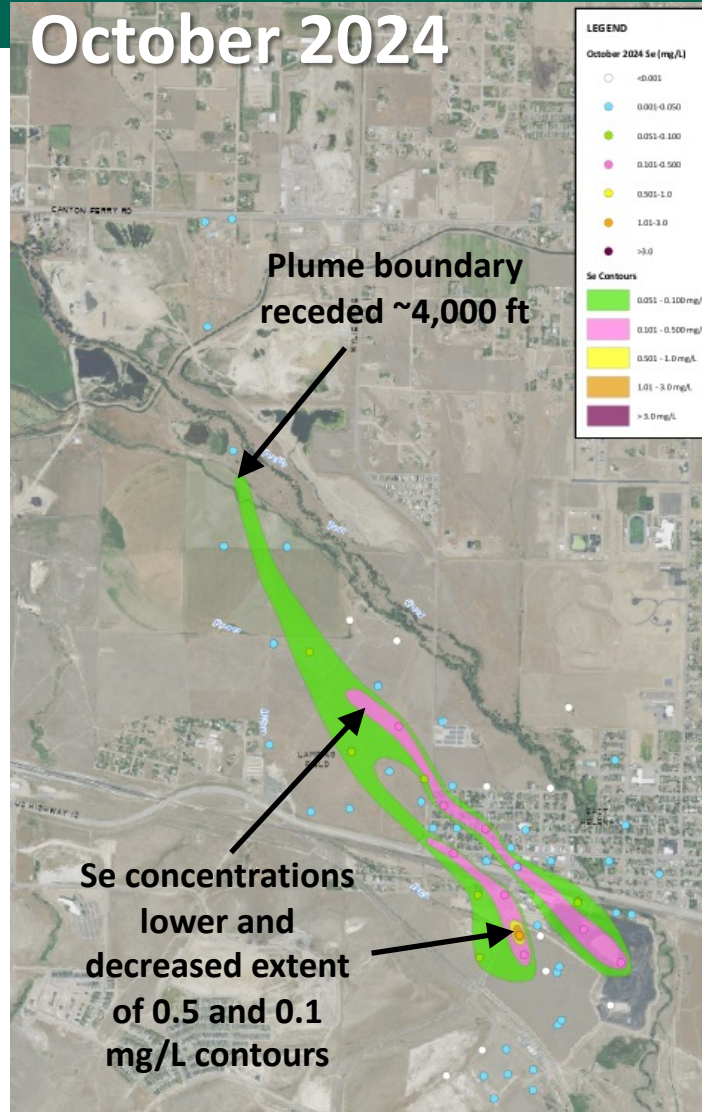
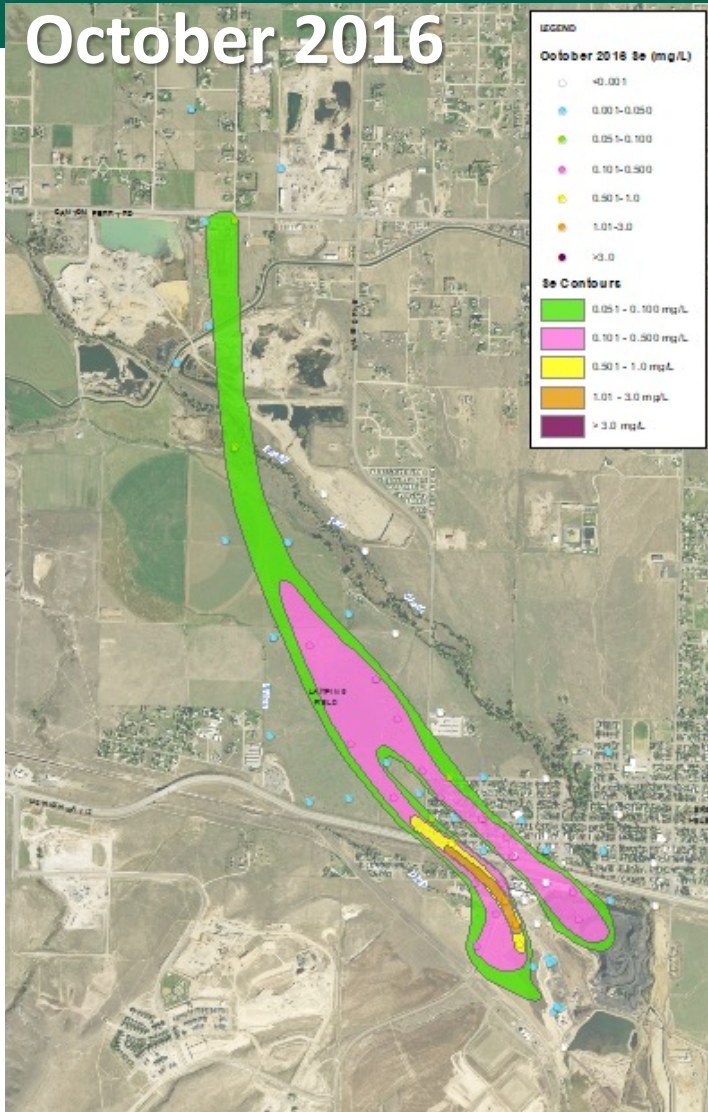
Groundwater Arsenic Plume



- ✓ Plume geometry consistent with historic results
- ✓ Limited migration of arsenic due to geochemistry
- ✓ As anticipated, no significant changes in overall arsenic plume footprint
- ✓ Decreases in source areas = decreased mass of arsenic in groundwater, may result in future plume retraction



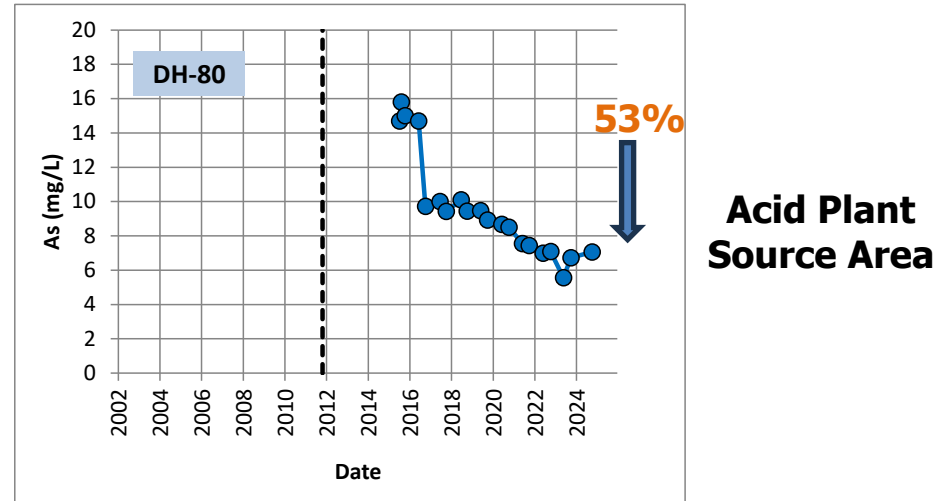
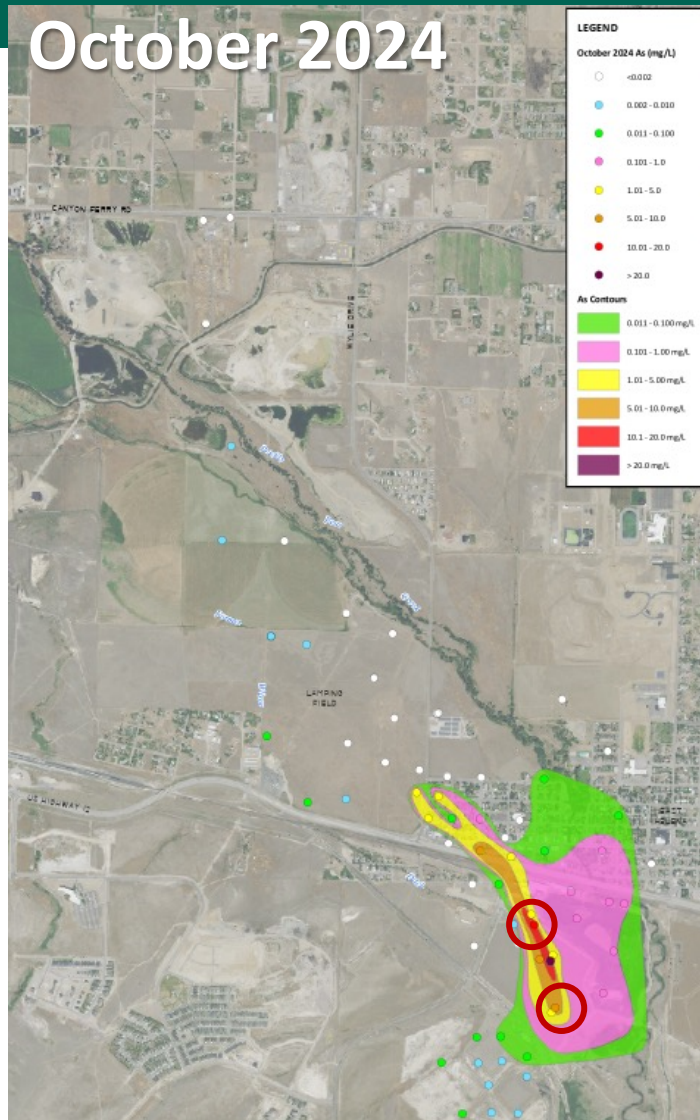
Groundwater Selenium Plume



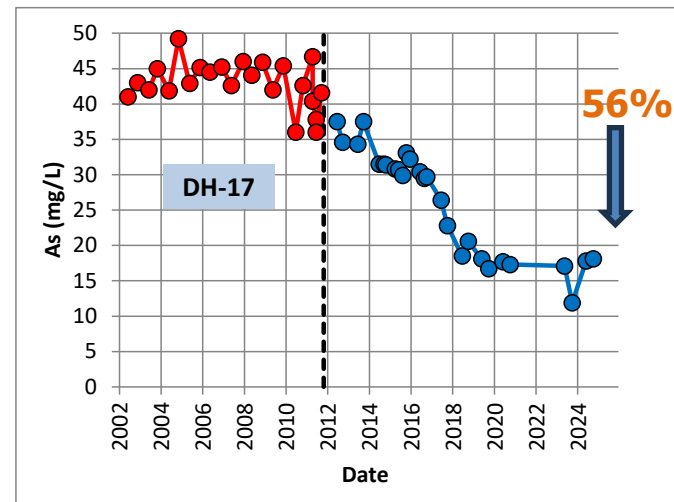
- ✓ Plume geometry changing over time (narrower and shorter)
- ✓ Selenium more mobile than arsenic (migrates further)
- ✓ 2023 retraction of plume front persisted in 2024
- ✓ Plume length decrease of ~4,000 ft total due to (1) source area decreases and (2) decreased groundwater flux from former smelter
- ✓ Additional retraction anticipated as source areas decrease further and slag pile is capped



Groundwater Arsenic Trends



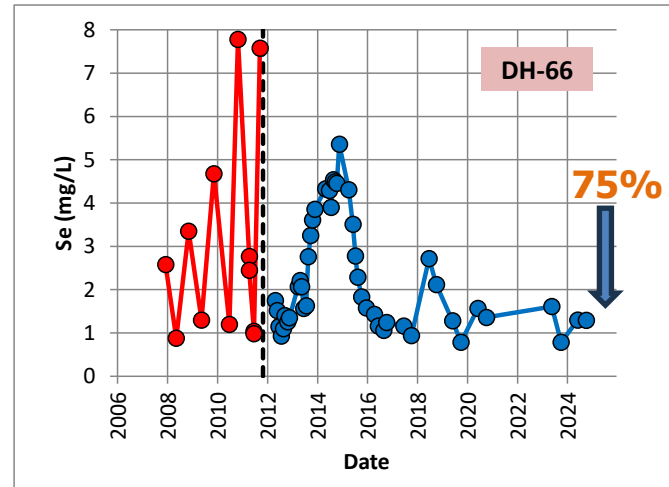
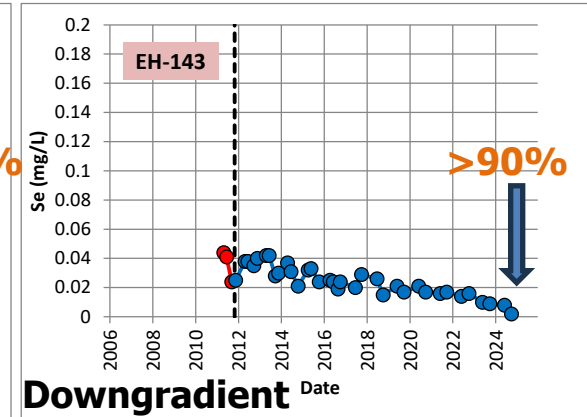
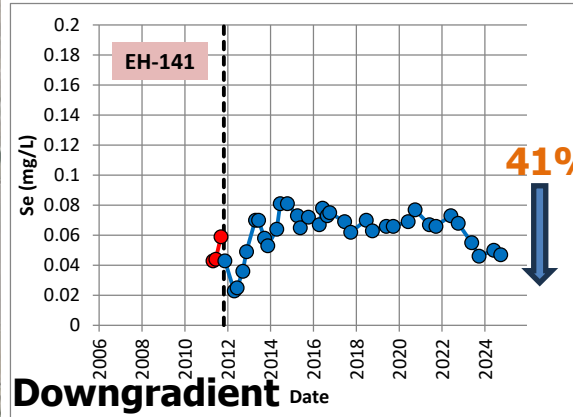
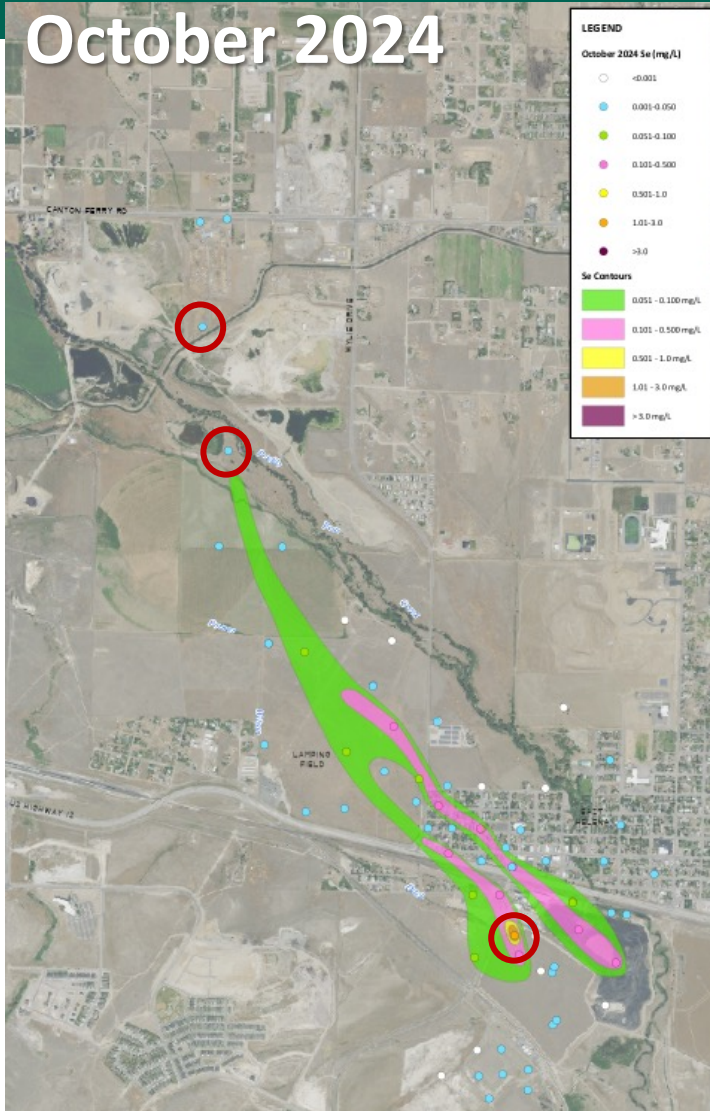
**North
Arsenic
Source
Area**



Montana Environmental Trust Group, LLC
Trustee of the Montana Environmental Custodial Trust

Groundwater Selenium Trends

October 2024



West Selenium Source Area



Montana Environmental Trust Group, LLC
Trustee of the Montana Environmental Custodial Trust

Cleanup and Redevelopment Update

Cindy Brooks

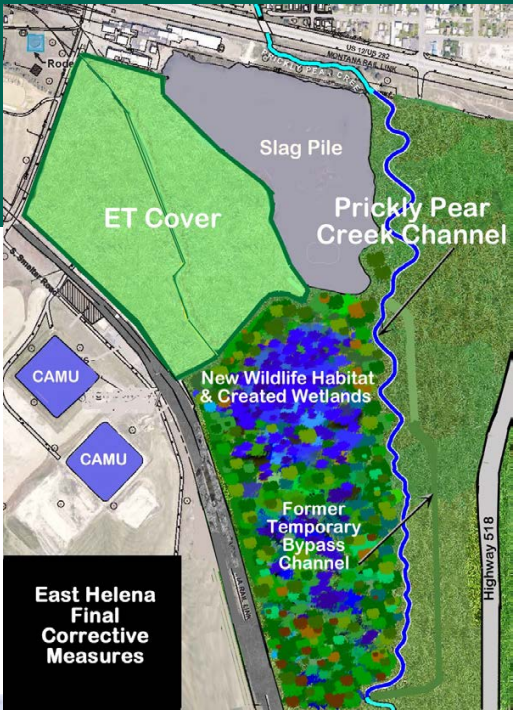
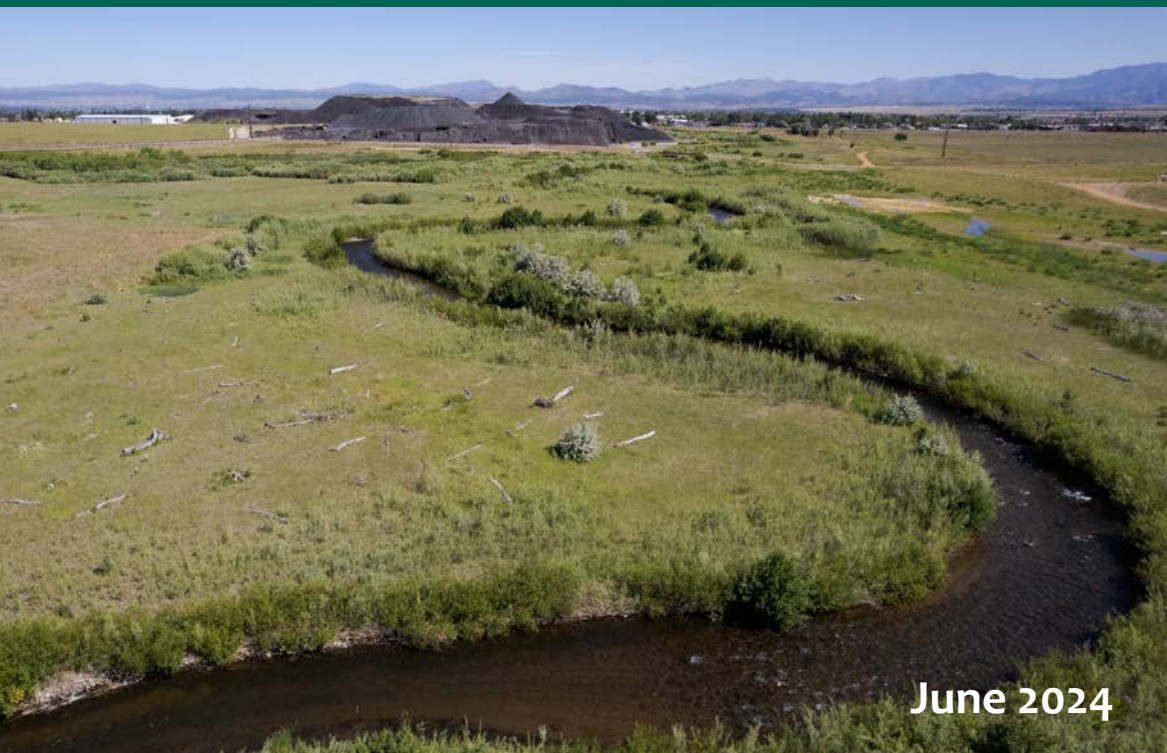
Managing Principal

Montana Environmental Trust Group (METG)

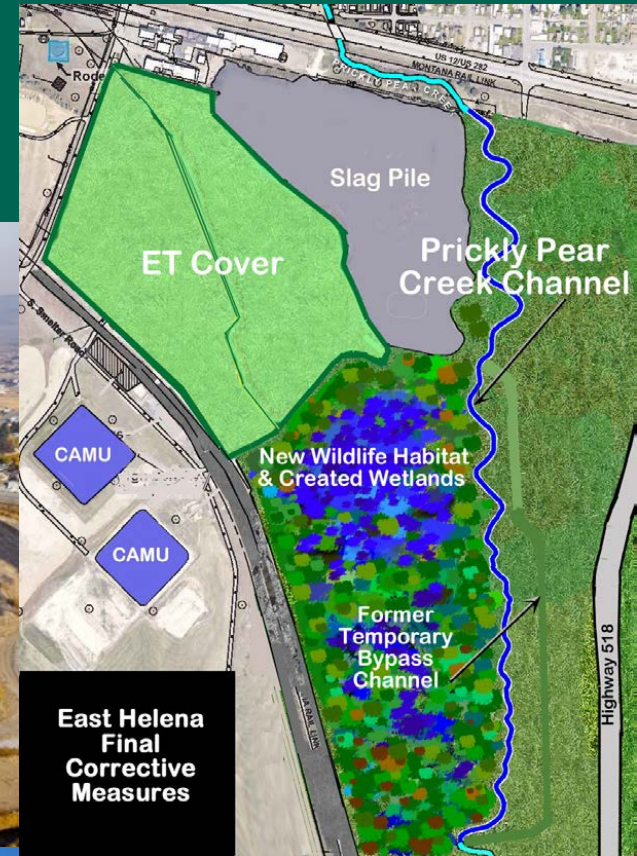


Montana Environmental Trust Group, LLC
Trustee of the Montana Environmental Custodial Trust

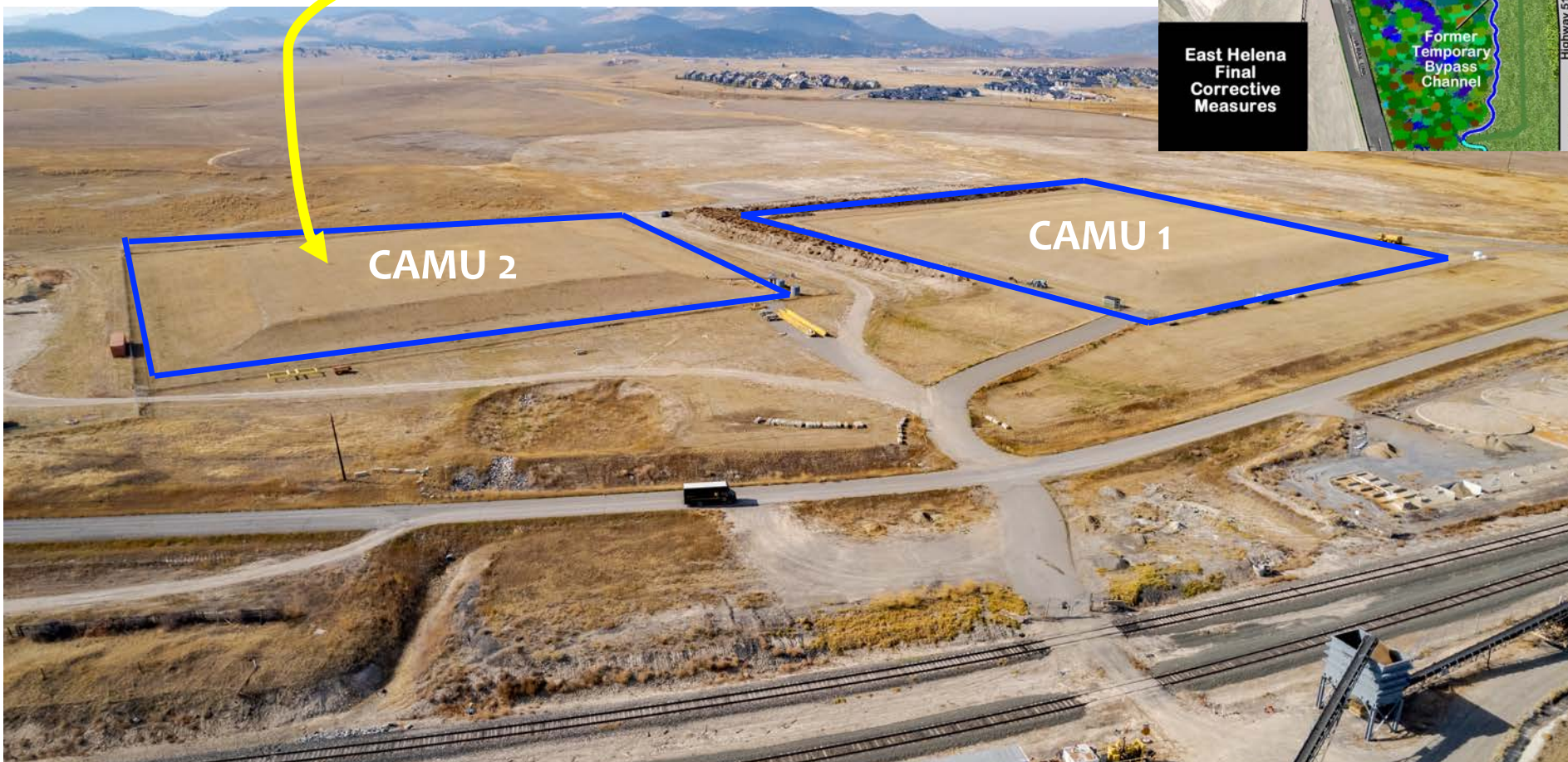
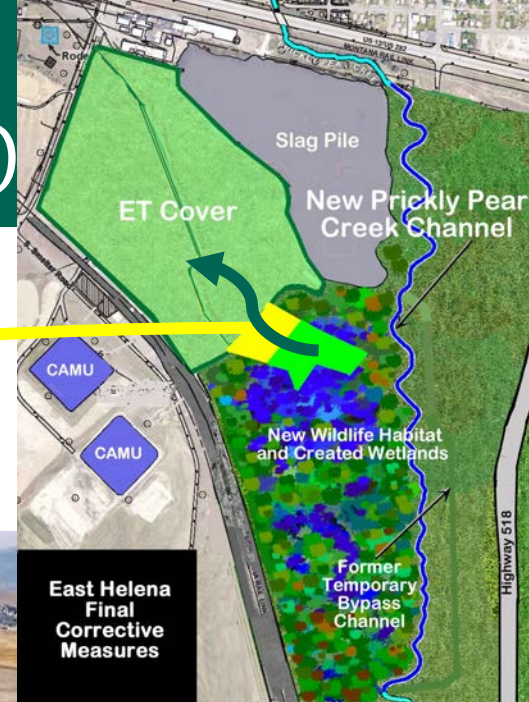
South Plant Hydraulic Control Corrective Measure Prickly Pear Creek Realignment Project



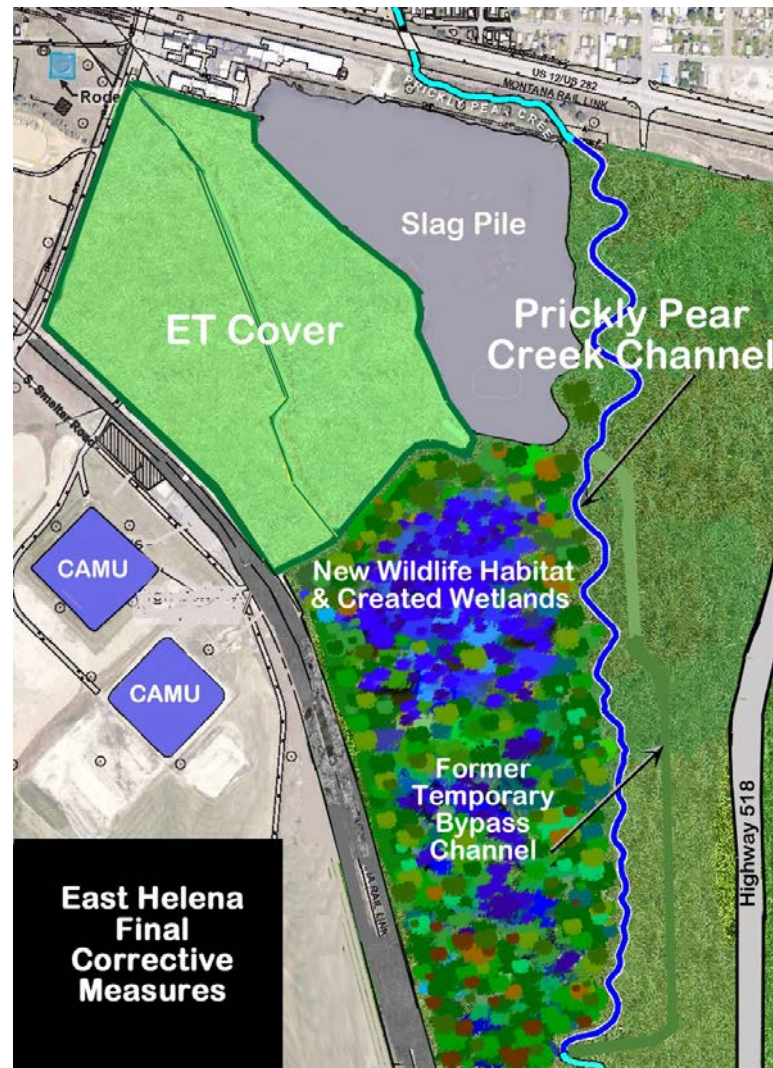
Evapotranspiration (ET) Cover Corrective Measure



Source Removal Corrective Measure and Corrective Action Management Units (CAMUs)

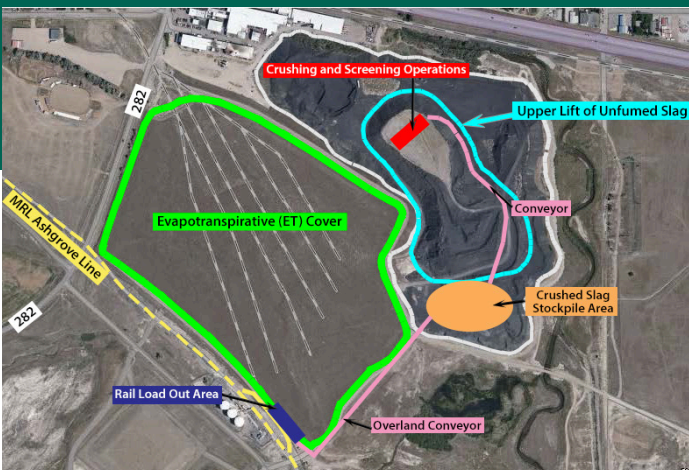


Final Corrective Measure: Grade and Cap Slag Pile



Montana Environmental Trust Group, LLC
Trustee of the Montana Environmental Custodial Trust

Unfumed Slag Removal Project

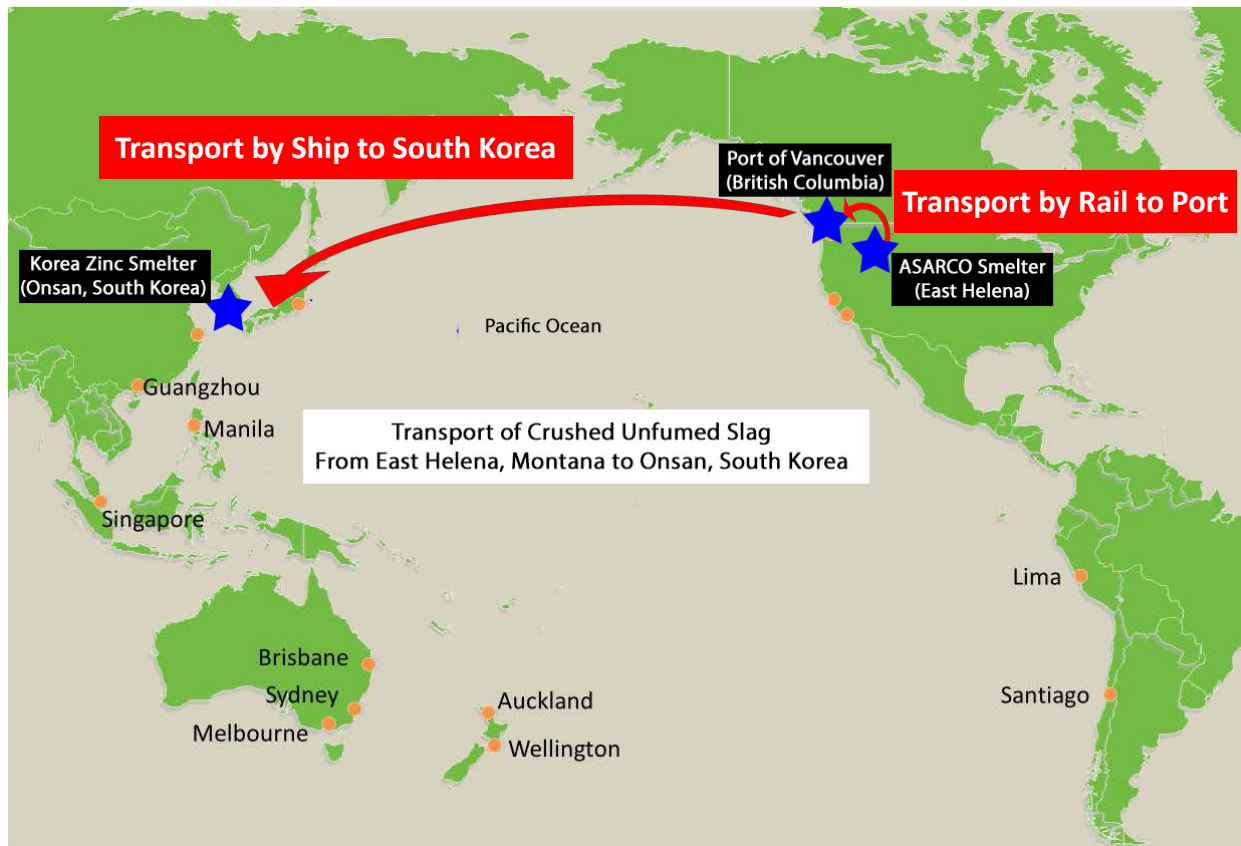


Unfumed Slag Removal Project



Unfumed Slag Removal Project

- ✓ Rail from East Helena to Port of Vancouver, British Columbia
 - ✓ UFS loaded onto ships at Port of Vancouver
- ✓ UFS transported to South Korea by oceangoing vessels

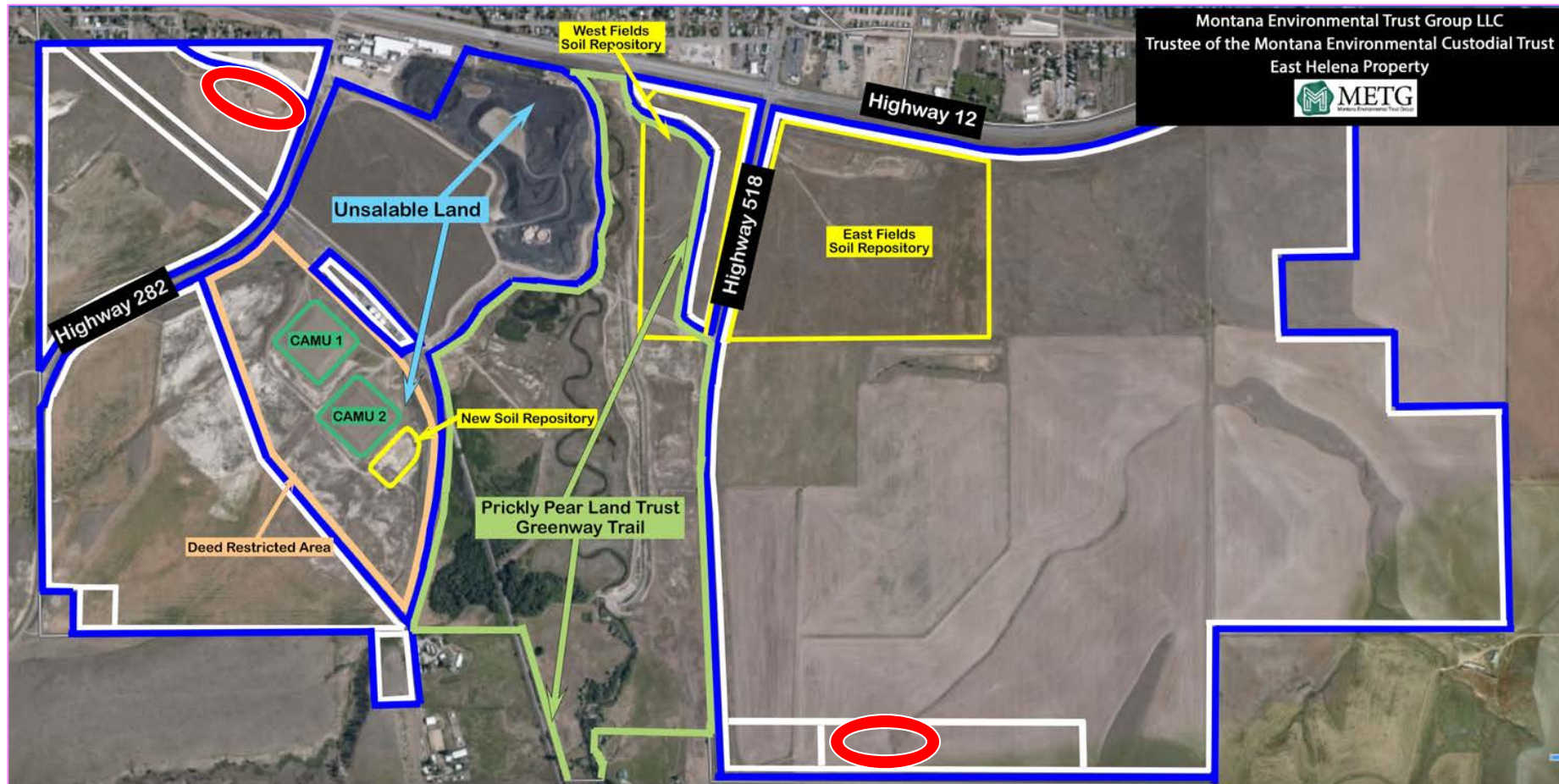


Unfumed Slag Removal Project

- ✓ Global pandemic supply chain, labor, and equipment shortages, delays, and cost increases
- ✓ Longshoremen strike
- ✓ Logistics of loading/unloading rail cars in East Helena
- ✓ Purchaser - Korea Zinc
 - Dedicated fuming train to processing East Helena slag
 - Needed minimum 20,000 tons/month
 - Metallica averaged 5,300 tons/month
 - Korea Zinc terminated contract with Metallica
- ✓ METG to continue working with Metallica and others due to significant environmental/economic benefits and on-site infrastructure; not delay more than 2 years maximum



East Helena Valley Rodeo Association



Montana Environmental Trust Group, LLC
Trustee of the Montana Environmental Custodial Trust



Slag Cover System Topsoil From Rodeo Arena



Montana Environmental Trust Group, LLC
Trustee of the Montana Environmental Custodial Trust

Relocation of East Helena's Historic Manlove Cabin



Montana Environmental Trust Group, LLC
Trustee of the Montana Environmental Custodial Trust

Deconstruct and Relocate East Helena's Historic Manlove Cabin



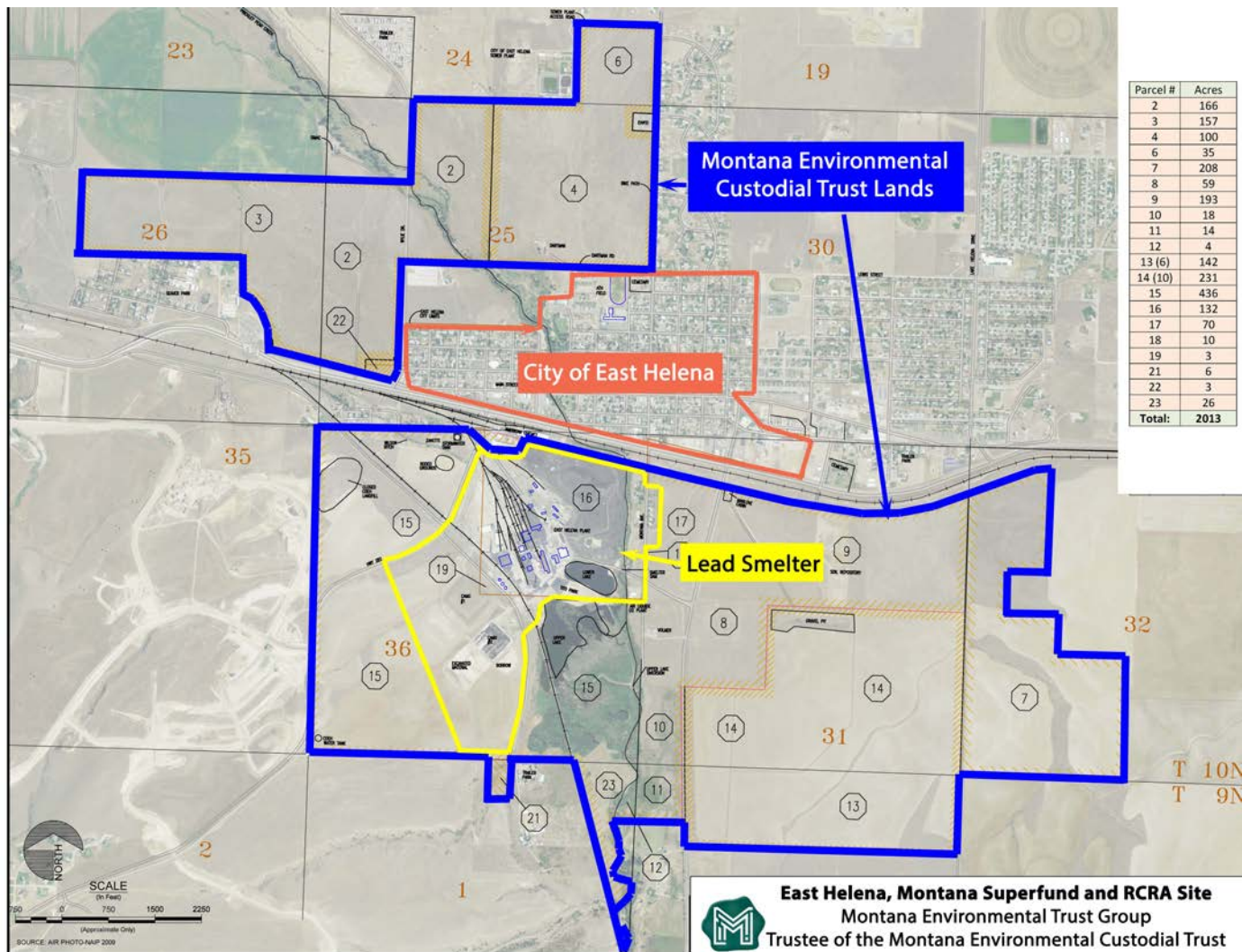
Montana Environmental Trust Group, LLC
Trustee of the Montana Environmental Custodial Trust

Deconstruct and Relocate East Helena's Historic Manlove Cabin



Montana Environmental Trust Group, LLC
Trustee of the Montana Environmental Custodial Trust

Former Asarco Lands Transferred to METG in 2009



Montana Environmental Trust Group, LLC
Trustee of the Montana Environmental Custodial Trust

Redevelopments Implemented to Date on Former ASARCO/METG Land



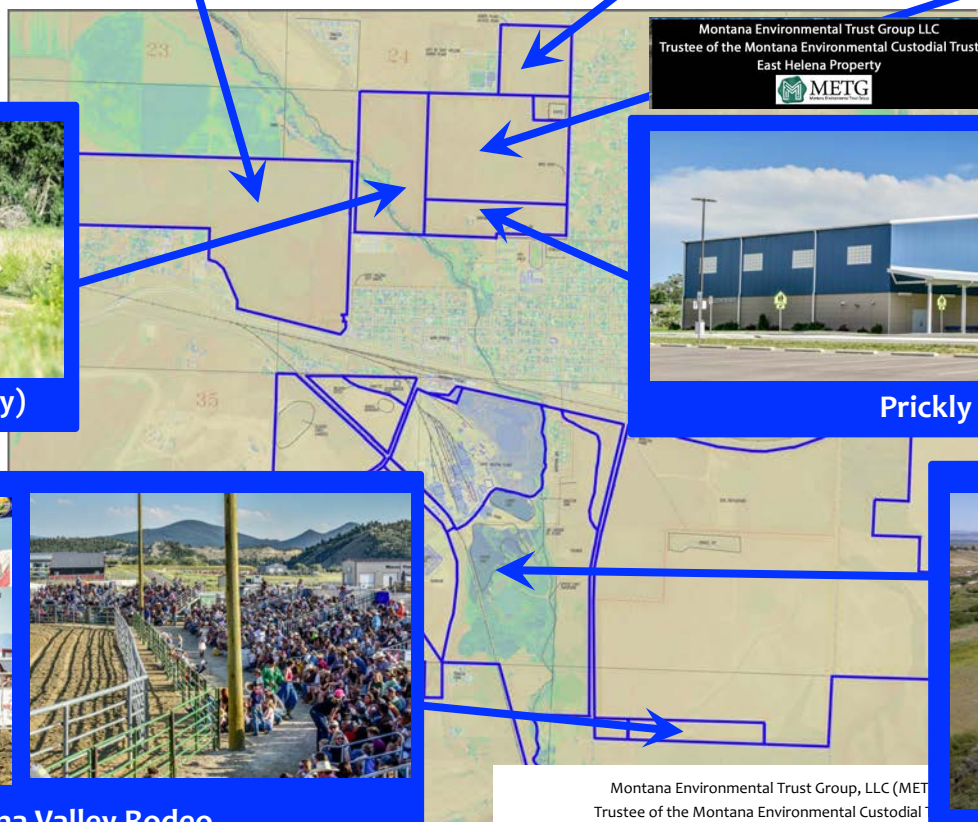
Town Pump



East Helena High School



Highland Meadows



The Grove (Greenway)



Prickly Pear Elementary School



East Helena Valley Rodeo



Prickly Pear Park (Greenway)

Former ASARCO/METG Lands South of Highway 12



Total Land Sales and Transfers To Date: 1,663



Montana Environmental Trust Group, LLC
Trustee of the Montana Environmental Custodial Trust

Former ASARCO Lands: Past and Future Growth

- ✓ Current uses of former METG land
 - 2 schools
 - 300+ single family residential subdivision (construction continuing)
 - 26,000 sq ft commercial center
 - 8-mile trail system
 - New rodeo arena

- ✓ Future uses of former METG land
 - ±5,200 diverse housing units
 - Range of commercial uses
 - Potential and planned light industrial uses
 - Other: schools, parks, and potential city services

- ✓ Private sector investment: more than \$2.2 billion on lands south of Highway 12 (jobs, taxes, and beneficial community and public assets)



Moving to East Helena City Hall!



Montana Environmental Trust Group, LLC
Trustee of the Montana Environmental Custodial Trust

Greenway Trail Progress and Plans

Mary Hollow

Executive Director

Prickly Pear Land Trust



Montana Environmental Trust Group, LLC
Trustee of the Montana Environmental Custodial Trust

Prickly Pear Land Trust – Greenway Trail



EAST HELENA

PARKS & TRAILS

connecting land and people



PRICKLY PEAR
LAND TRUST

Prickly Pear Land Trust – Greenway Trail

THE GROVE

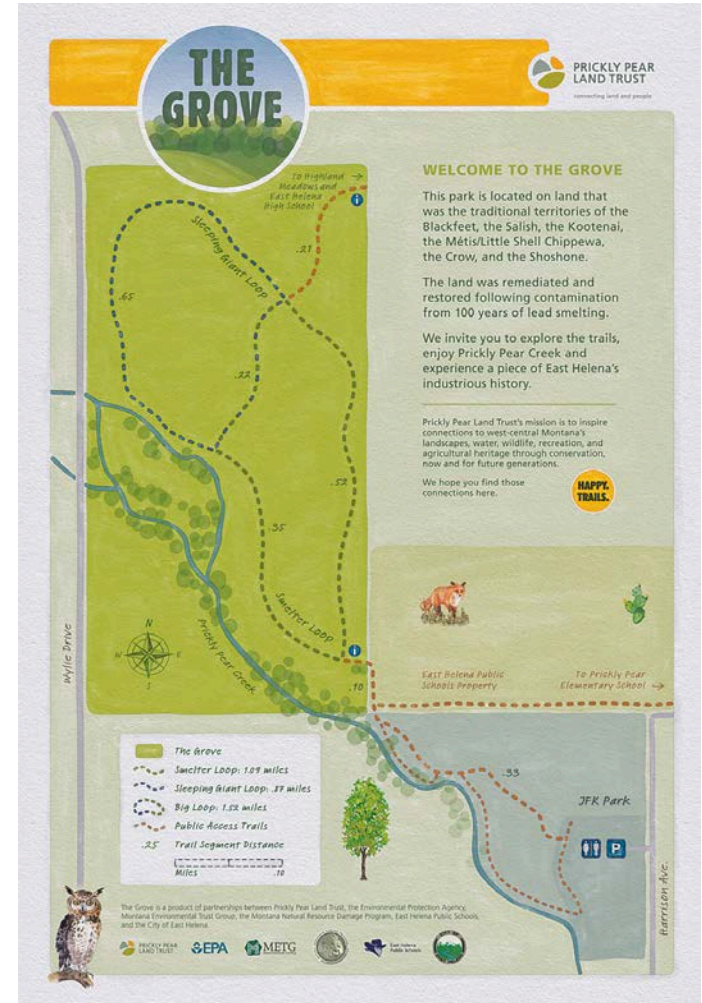
UPDATES:

- Trails are fixed
- Seeing a lot public use

NEXT UP:

- Put up fencing
- Weed management

Prickly Pear Land Trust – Greenway Trail



Prickly Pear Land Trust – Greenway Trail

PRICKLY PEAR PARK

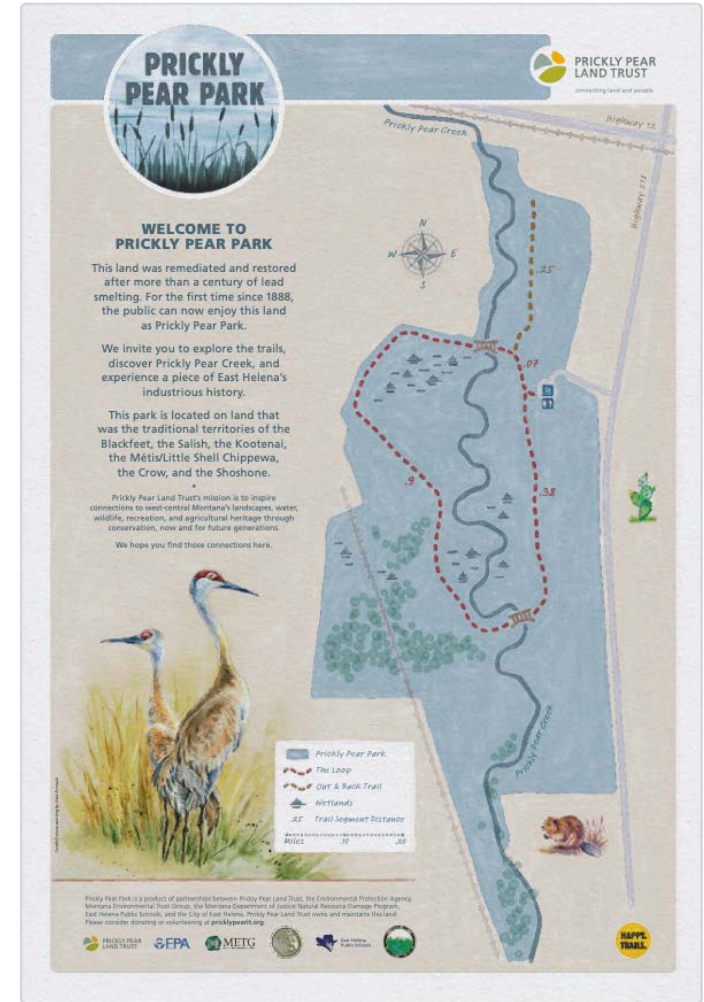
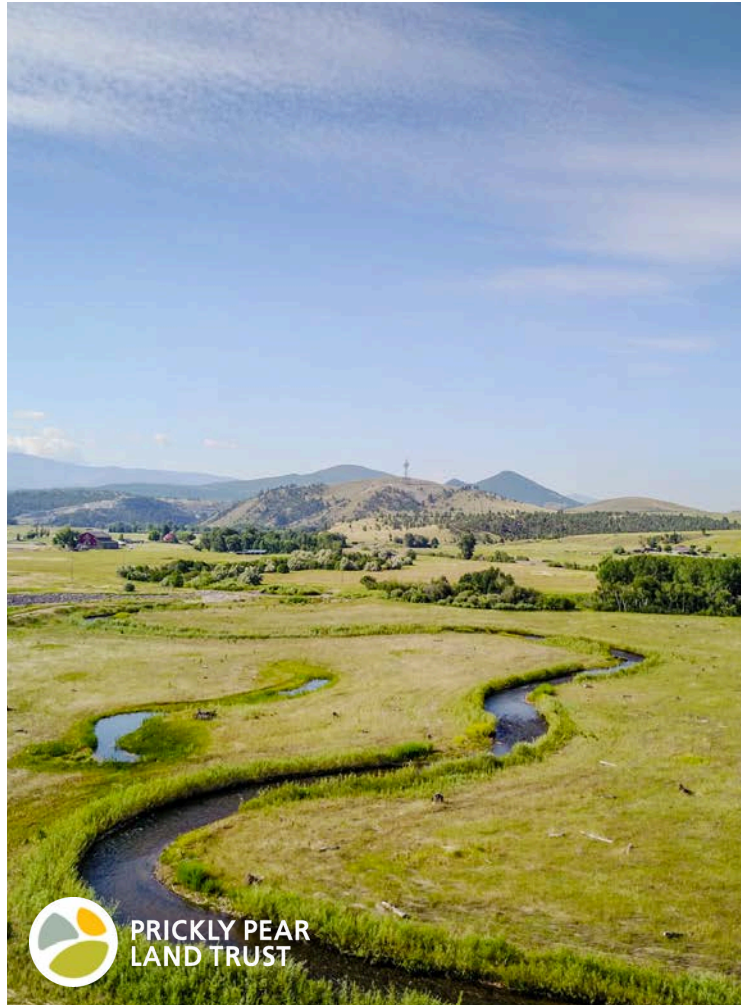
UPDATES:

- Bridge has been installed
- Vault toilet has been installed
- Handicap parking pad installed

NEXT UP:

- Finishing touches (new single track trail)
- Open Spring 2025

Prickly Pear Land Trust – Greenway Trail



Prickly Pear Land Trust – Greenway Trail



USE THE NEW TRAILS

Get outside with friends and family



VOLUNTEER

Outdoor Education,
Trail & Land Maintenance, Events



FOLLOW

Facebook: PricklyPearLandTrust
Instagram: @pricklypearlandtrust
Website: pricklypearlt.org



DONATE

GET INVOLVED

Prickly Pear Land Trust – Greenway Trail

HAPPY TRAILS!



PRICKLY PEAR
LAND TRUST

Redevelopment Progress and Plans

Gary Oakland
President and Founder
Oakland Companies

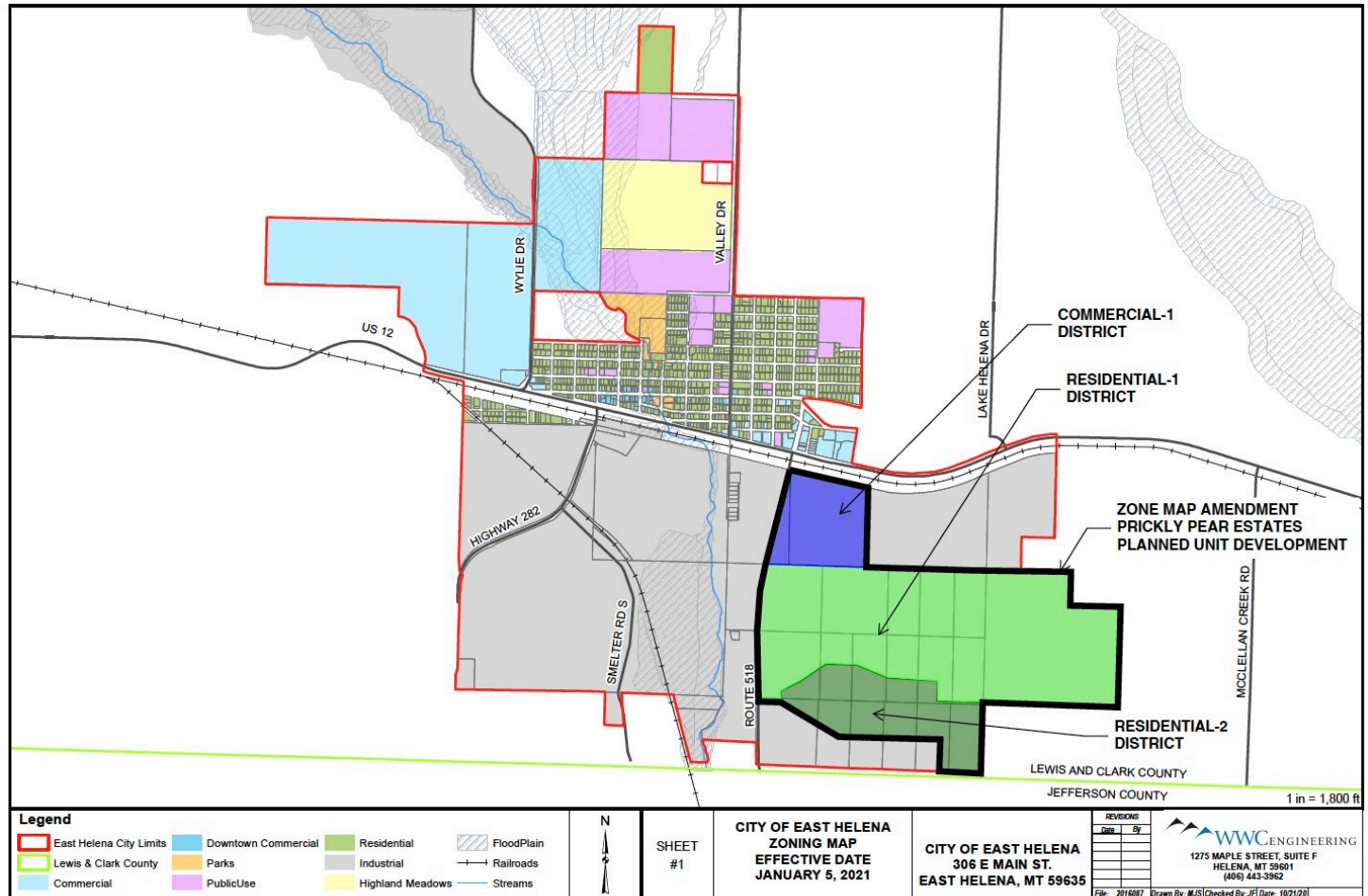


Montana Environmental Trust Group, LLC
Trustee of the Montana Environmental Custodial Trust

Highland Meadows Subdivision



Prickly Pear Estates



East Helena Housing Plans and Goals

Jacob Kuntz

Executive Director

Helena Area Habitat for Humanity



Montana Environmental Trust Group, LLC
Trustee of the Montana Environmental Custodial Trust

Helena Area Habitat for Humanity



Helena Area Habitat for Humanity



Helena Area Habitat for Humanity



Helena Area Habitat for Humanity



Helena Area Habitat for Humanity



Helena Area Habitat for Humanity



Helena Area Habitat for Humanity



CITY COUNCIL, EAST HELENA, MONTANA. MARCH 15, 1965

Left to right, seated:

Jack G. Jones, Treasurer; Walter S. Murfitt, City Attorney; James S. Petek; Councilman; David E. Foster, Mayor; John M. Muffick Jr. Councilman; Isabelle Pistelak, Councilman; Lazo Nick, Councilman;

Standing: Ann U. Rose, Deputy Clerk; Albert H. Rose, Clerk; Joe Pistelak, Water Comm. Absent: Police Judge Anton Murgel.

Helena Area Habitat for Humanity



Helena Area Habitat for Humanity



Helena Area Habitat for Humanity

An aerial perspective sketch of a planned residential community. The layout features a central green corridor with trees and a large open green space. Surrounding these are rows of houses with brown roofs. In the foreground, a river flows horizontally, with a road and some parking areas just above it. The background shows rolling hills under a light sky. The text 'Rose Hills' is superimposed in the center of the sketch.

Rose Hills

Helena Area Habitat for Humanity



Helena Area Habitat for Humanity

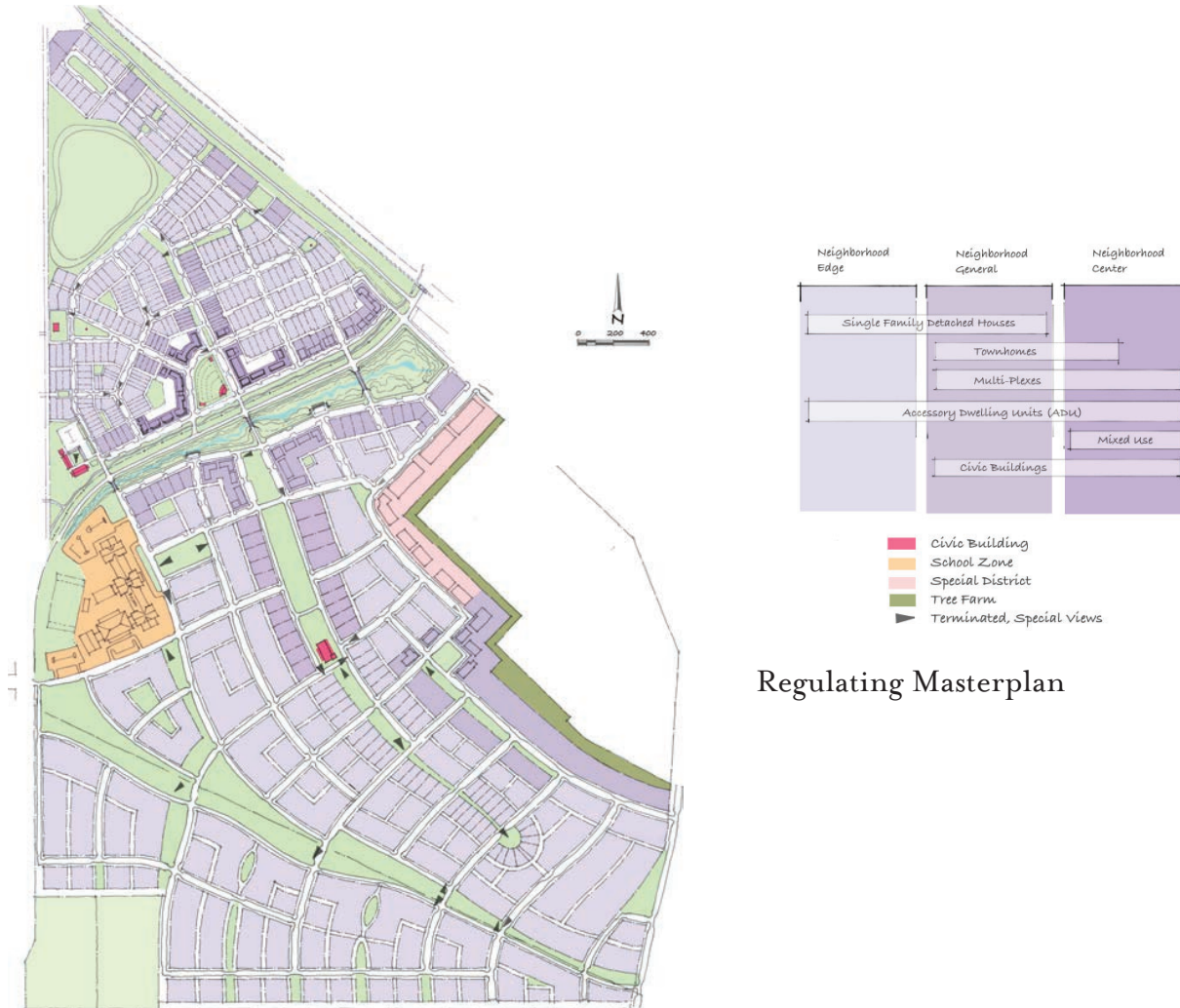


Area Map with Site Included



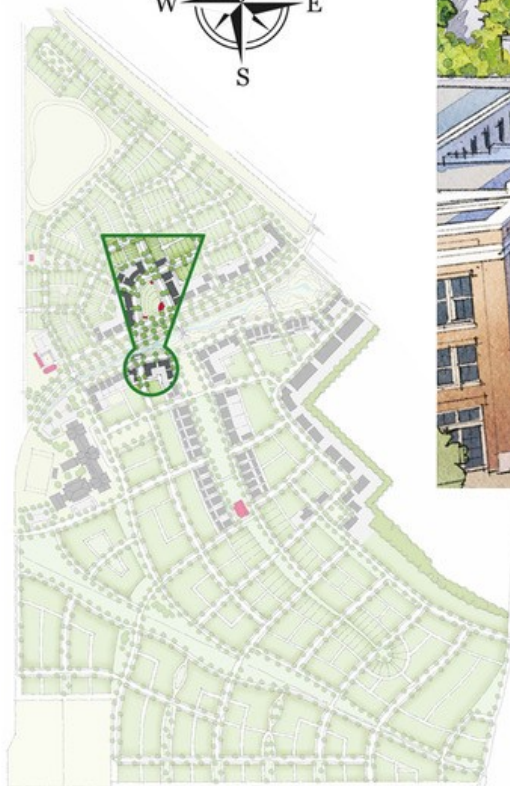
Area Map Enlarged

Helena Area Habitat for Humanity



Regulating Masterplan

Helena Area Habitat for Humanity



★ Highlighted area on map is location of image



Town Center Green—*Looking Northwest*

Building Types Depicted



Commercial/Residential



Commercial/Residential



Live-Work Commercial/Residential



Live-Work Commercial/Residential

Helena Area Habitat for Humanity



★ Highlighted area on map is location of image



Townhome and Cottage Neighborhood—*Looking North*

Building Types Depicted



Helena Area Habitat for Humanity



★ Highlighted area on map is location of image



Multi-Family and Live-Work—*Looking North*

Building Types Depicted



6-Plexes



Mixed Use



Live/Work Units



Townhomes

Helena Area Habitat for Humanity



★ Highlighted area on map is location of image



Townhome Lawn—*Looking East*

Building Types Depicted



Townhomes



4-Plexes



4-Plexes

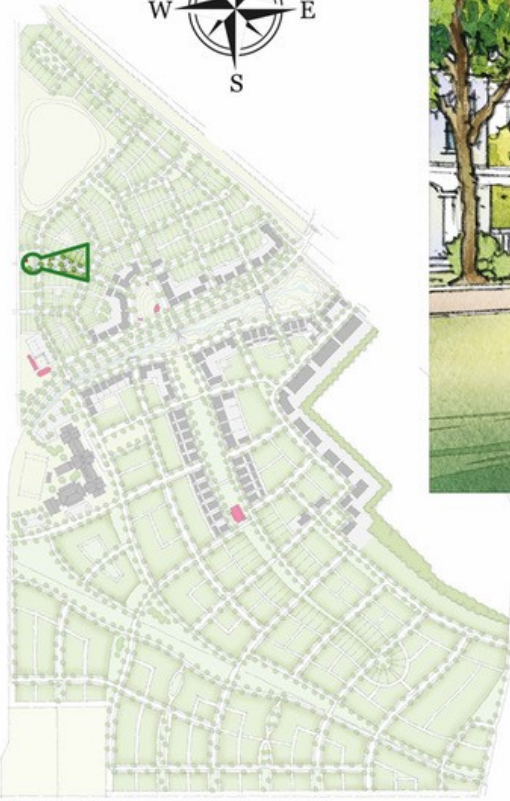


Townhomes



6-Plexes

Helena Area Habitat for Humanity



★ Highlighted area on map is location of image



Single Family Neighborhood—*Looking Northeast*

Building Types Depicted



Single Family



Single Family



Single Family



Single Family Townhomes



Single Family Townhomes

Helena Area Habitat for Humanity



Southern Acreage—*Looking Southeast*



* Highlighted area on map is location of image

Building Types Depicted



6-Plexes



8-Plexes



4-Plexes



Duplexes



Townhomes

Helena Area Habitat for Humanity

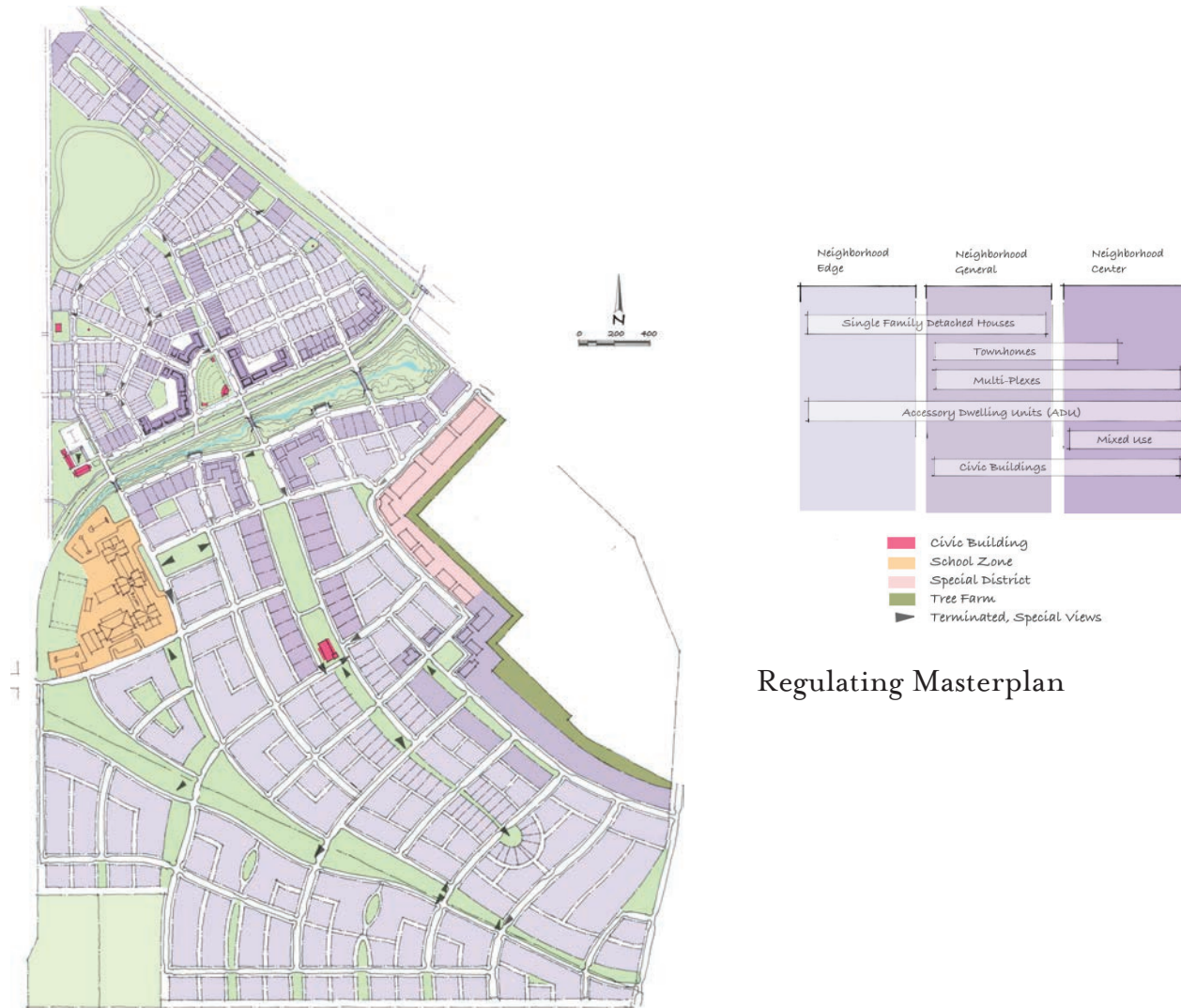


Townhomes



EAST HELENA CHARRETTE | East Helena, Montana | Habitat For Humanity
February 2024

Helena Area Habitat for Humanity



Regulating Masterplan

East Helena Smelter Public Meeting

Questions and Comments?



Montana Environmental Trust Group, LLC
Trustee of the Montana Environmental Custodial Trust

East Helena Team Contact Information

✓ **Bridget Williams**

USEPA Remedial Project Manager

williams.bridget@epa.gov

406-594-8792

<https://cumulis.epa.gov/supercpad/cursites/csitinfo.cfm?id=0800377>

✓ **Cindy Brooks**

METG (Custodial Trust) Managing Principal

cb@g-etg.com

617-448-9762

<https://www.mtenvironmentaltrust.org>



Montana Environmental Trust Group, LLC

Trustee of the Montana Environmental Custodial Trust